

Museum and Cultural Advisory Board – Meeting Minutes

The Museum and Cultural Advisory Board met in a regular meeting via Zoom video conference on Thursday July 23, 2020.

Members Present:

Ivan Martinez
Theresa Schlechty
Ronna Green
K. Alycia Perry
Michelle Streeter
Angela Buer
Jocelyn Condon
Nick Willis
Melvin Van Vorst

Members Absent:

David Dean
Tara Phelps
Dilworth Brinton, Jr.

Staff Present:

Cindy Ornstein
Sarah Goedicke
Randy Vogel
Sunnee O'Rork
Alison Stoltman
Illya Riske

Ivan Martinez moved to start the meeting and Theresa Schlechty seconded. K. Alycia Perry called the meeting to order at 4:06pm.

Introduction of New Board Members: New Board members Theresa Schlechty and Melvin Van Vorst briefly introduced themselves to the rest of the Board.

Public Comments: No members of the public were present.

Approval of Minutes from the May 28 Meeting:

No corrections, Nick Willis moved to approve the minutes as written and Michelle Streeter seconded. Board members voted unanimously to approve the minutes from May 28, and they will be posted on the city's website.

Take Action: Elect a Chair for FY 2020-2021

Nick Willis nominated K. Alycia Perry and Jocelyn Condon seconded. The Board voted unanimously to elect K. Alycia Perry as Chair for FY 2020-2021

Take Action: Elect a Vice-Chair for FY 2020-2021

K. Alycia Perry nominated Nick Willis and Michelle Streeter seconded. The Board voted unanimously to elect Nick Willis as Vice-Chair for FY 2020-2021.

Take Action: Approve Creative Economy Fund Award Recommendations – K. Alycia Perry

K. Alycia Perry introduced the process for the Creative Economy Fund Community Panel, as she participated in the panel. Each panel member rated the applications based on a matrix and based on how well each applicant addressed the questions in the grant application. One applicant she found to be particularly impressive was Tetra String Quartet, who gives free specialized performances for families with Autistic family members.

Applicants apply for in-kind donations based on their base rental fees, of which a percentage is awarded based on the panel's scores. The Board is voting to approve the awards as recommended by the Community Panel (**see Exhibit A**).

Theresa Schlechty moved to approve the awards as recommended by the Community Panel and Melvin Van Vorst seconded. The Board voted unanimously to approve the awards as recommended by the Community Panel.

Director's Report – Cindy Ornstein

Cindy Ornstein reported that the City of Mesa is giving monetary support to Mesa Arts Center's Mesa-based Founding Resident Companies in the form of rent and utility assistance as a subset of the Small Business Reemergence Program (under Mesa CARES), except for Ballet Etudes, because they are physically located in Gilbert. Cindy is reporting on this as an Arts & Culture update, as it relates to the question of "What is the City doing to support Mesa non-profits and arts organizations?" Cindy Ornstein shared the amounts given to each organization (**see Exhibit B**). She explained that the much larger amount awarded to East Valley Children's Theatre was due to their much larger rent because of the larger facility needed for their classes. The total amount of support was \$33,624, and the organizations were very appreciative of the help.

Cindy Ornstein then reviewed Arts & Culture Programming during COVID (**see Exhibit C**). The department is taking a collaborative approach and not worrying about "staying in lanes" because the department has lost a lot of staff and everyone is needed on these projects. Arts & Culture is also collaborating with other city departments on programs. The department is looking for where we can get the biggest bang for our buck in terms of human resources as well as funding. Cindy presented some department highlights.

A large part of the department's effort to is to support K-12 education. We have, and continue to, speak with teachers and schools to see how we can best support them this school year. These will be standards-based resources. The department's work with vulnerable populations continues virtually, including Arts in Service and Creative Aging. We are exploring other ways to engage with older/isolated adults and those in group living facilities.

Arizona Museum of Natural History has a full complement of virtual resources that support family/individual well-being, learning, and entertainment. They are launching a new Natural History course this fall that will have two classes per week for eight weeks. i.d.e.a. Museum also has a broad array of virtual content for a variety of audiences. They will add virtual Girl Scout workshops this fall.

All Arts & Culture institutions created content for *Together in the Desert*, a part of the Wednesday Family Take Out Night, which featured family friendly artmaking activities that make up a larger community art project and promoted Downtown Mesa restaurants. Each institution is also exploring ways to build community at this time.

One program in exploration right now is a Downtown Mesa exhibition of Ray Villafane works to celebrate the opening of Alice Cooper's Solid Rock Teen Center in Downtown Mesa later this year. The department is also exploring yarn bombing and drive-in concerts. When things improve, some outdoor activities that we plan on are opening Mesa Grande and having events at Mesa Amphitheater. We plan on having Mesa Prototyping Festival this spring and hope to bring Emerge and the Youth Media Festival to fruition this spring.

Staff Reports

Mesa Arts Center (MAC) Update on Programs and Operations – Cindy Ornstein

Día de los Muertos will be a virtual festival this year and the DDLM Committee is exploring what the community altar will look like. MAC launched online studios classes and Art To Go boxes, which sold out in the first day. We'll have new activities for Art To Go quarterly. Creative Catalysts created the Snail Mail art project, where people submit some information about them, and an artist creates a custom piece of art for them. MAC also presented an online magic show and Randy Vogel is exploring other virtual options. "Show Us What You Got!" was launched this week, which is a contest and online exhibition featuring art created during the pandemic.

Randy Vogel shared that Performing Live is working on a reboot and figure out how to create programming in a different environment. In August, we will bring back the interactive online magic show we tried in June. It was received well, and we are making some changes to reach a wider audience.

Arizona Museum of Natural History (AzMNH) – Alison Stoltman

Alison Stoltman shared a presentation on what AzMNH is working on, aside from Education as Cindy Ornstein covered that (**see Exhibit D**). The department gave Dr. Tom Wilson a nice send-off for his retirement. A lot of work is going on in the galleries with the exhibition team. The 75 Million BC gallery features AzMNH's own research, which is exciting. Incredible progress has been made by the exhibition team despite not having access to their volunteer workforce.

The museum is also working on changing the high-touch interactives to activities that don't require touch. This means that the DinoZone had to go. The floor will be changed out, and the Dig It! exhibition will be installed. This gallery will highlight the differences between Paleontology and Archaeology. In addition to the exhibition and education work, there are some building improvements going on right now. The building improvements highlighted in Exhibit D are not costing the Arts & Culture Department money. Also being worked on are new opening protocols.

The team has also been working very hard on finding grants and the museum has been awarded quite a few.

i.d.e.a. Museum – Sunnee O'Rork

i.d.e.a. Museum is working on revamping 15 interactives in the museum. The team has created a light activity to replace a high touch activity in ArtVille and other parts of ArtVille are being changed out. The Museum will have one-way routing through the facility with timed ticketing upon reopening. We will also be activating the Atrium and utilizing it more by

creating a fantasy garden and using some pieces from the ASU Prototyping Festival project. For the touch pads that will remain, we will provide styluses to visitors. Each family will get a caddy of items needed to explore the museum.

We are proud to announce that the Foundation ended the year in the black, thanks to grants awarded through the efforts of Lindsay Hochhalter and flexibility of existing grant programs.

The museum is also moving forward with renovations and has contracted a designer. There will be some safety upgrades as part of this project while the museum is closed.

Discussion: How can the board help the arts in Mesa during COVID?

This item was moved on the Agenda to after staff reports to better inform the Board's Discussion. The Board wants to discuss how they can get more involved and active, and advocate to Council. Another question is whether to form a special working group, or Task Force.

Nick Willis discussed what other Arizona cities have done financially to support the arts, which shows there is statewide interest in supporting the arts. A concern is that Mesa may lose arts organizations or not be able to compete with those in cities where they received financial assistance. Nick mentioned an article that stated there are 2.5 million dollars left in Mesa CARES for emergency funding and feels this is the time to try to get some assistance for Mesa-based arts organizations.

K. Alycia Perry wants to see support for 501(c)3 arts organizations that are based, or do business, in Mesa. The Small Business Reemergence program was only open to for-profit businesses and excluded non-profits. This economic downturn is way worse for the arts than the 2008 recession was. Theresa Schlechty agreed that we should be looking at support for non-profits at this time.

K. Alycia Perry made a motion to create a Task Force/Working Group to explore opportunities to support arts organizations based, or doing business, in Mesa. Theresa Schlechty seconded. The Board voted unanimously to form the Task Force/Working Group to explore opportunities to support arts organizations based, or doing business, in Mesa.

Board members who stated they want to be part of the Task Force/Working Group are Nick Willis, K. Alycia Perry, Theresa Schlechty, and Ivan Martinez.

Cindy Ornstein thanked the Board for their enthusiasm and willingness to help Mesa arts organizations that are smaller than their Phoenix peers and in need. She also stated that the MAC Foundation is also eager to participate in arts advocacy in Mesa and would be a good partner to explore in this endeavor. It may also be a good idea to reach out to the i.d.e.a. Museum Foundation, AzMNH Foundation, and Creative Catalysts.

Discuss any Projects, Initiatives, or Presenters of Interest – Board Members

No projects, initiatives, or presenters of interest to discuss.

Report on Conferences and/or meetings/Performances Attended: Board Members – Information only

Jocelyn Condon has been helping the Mesa Historical Museum with their *Women in Aviation* exhibit. Other Board members mentioned they may have items for this exhibit. Cindy Ornstein informed the Board that both Mesa Historical Museum and Southwest Shakespeare Company have agreements with the city where they receive some funding.

The next scheduled meeting date is September 24, 2020 via Zoom video conference.

There being no further business, K. Alycia Perry moved to end the meeting and Michelle Streeter seconded. The meeting adjourned at 5:28pm.

Respectfully submitted,

Cindy Ornstein

Cindy Ornstein, Director
Arts and Culture Department

EXHIBIT A

**Creative Economy Fund Awards
2020-2021**

Arizona Arts Academy

Arizona Arts Academy is applying for a Chinese New Year show. Chinese New Year is the biggest holiday in China, and some other Asian countries, with many traditions. During this performance, they will incorporate all things to do with celebrating the holiday using different art forms to bring these traditions to life on stage. There will be singing, dancing, instruments, acrobats, choir and much more to immerse in the experience not only the Chinese audience, but also people of other ethnic backgrounds. This year's performance will incorporate over 200 performers.

Eligible Rental Fee: \$2,674
Recommended Award: \$1,471

Ballet Etudes

Ballet Etudes is applying for assistance with their full-length production of The Nutcracker, which includes youth dancers from throughout the Valley as well as some local professionals. Each year they perform The Nutcracker and include something new in the form of sets, drops, costumes, and/or choreography, and this year they strive to continue this tradition. Plans for audience engagement include backstage tours and information on how this program is brought to life.

Eligible Rental Fee: \$5,000
Recommended Award: \$3,500

CYT Phoenix – Christian Youth Theatre:

CYT Phoenix produces three Broadway-style musicals each season and are applying for support Charlotte's Web and Disney's Tarzan. At CYT events, the public will experience excellent performances from local Valley youth, produced by a community of parents and artistic personnel who have a passion for the arts and the important role they play in the lives of students and our community. Both Charlotte's Web and Disney's Tarzan focus on themes of adoption, acceptance, and the celebration of our differences.

In an unprecedented time of a fragmented society due to the COVID-19 pandemic and political and cultural unrest, it is CYT's desire to tell stories through the beautiful art form of musical theater that will magnify the importance of kindness, understanding, and belonging.

Eligible Rental Fee: \$5,000
Recommended Award: \$2,000

East Valley Children's Theatre:

Each year, East Valley Children's Theatre produces the winning play from its Aspiring Playwrights Contest. This year the winning play by J.S. Puller of Chicago and Joel Esher of New York, The Clumsy Princess, will become a part of EVCT's 2020-21 season. The creative experience that designers, directors, and especially young actors have, being involved with a show for the very first time, is astonishing. In addition to the experience of a live theatrical performance in a professional facility, they will have several workshops with the playwright for the cast and crew.

This coming season EVCT will again hold a 10-minute play writing festival for high school students in which all of the submissions will have a staged reading at the Mesa Arts Center with verbal comments from the playwrights and presentation of awards. J.S. and Joel, our winning playwright and composer, will also hold a special workshop at the festival for the student playwrights on collaborating to create a play with music that enhances the story.

Eligible Rental Fee: \$2,460
Recommended Award: \$1,968

Mesa Encore Theatre:

Mesa Encore Theatre has presented community theater productions at the Mesa Arts Center since its opening and is a Founding Resident Company. With the COVID-19 pandemic still causing great uncertainty for public activities over the next 6-12 months, MET feels it is impossible at this moment to finalize any plans. They will choose smaller productions with decreased cast sizes and reduced production expense (sets, props, costumes, etc.) in an effort to minimize financial expenditures and viral exposure for volunteers while maximizing income from what will probably be greatly reduced audiences. MET will be very creative in maintaining high quality, intimate experiences for audiences while safeguarding the financial resources of the organization and its donors.

Eligible Rental Fee: \$5,000
Recommended Award: \$2,750

Metropolitan Youth Symphony:

Metropolitan Youth Symphony is requesting support for the 2020-2021 Concert Series. They are proud to provide quality musical experiences for 300+ young musicians, as well as engage the community they serve, and beyond.

Performances held at the Mesa Arts Center are each a culmination of auditions, many rehearsal hours, volunteer time, careful planning, and organization; as well as workshops, reflection, evaluation and collaboration with professionals in the field. Each program begins with the least experienced musicians, and advances through the evening, ending with the most experienced musicians in concert. MYS will highlight the Honors String Quartets prior to each performance in the lobby and showcase their Fiddlers 2.0 on the final performance of the season.

New for season 39 includes the Honors Quintets for Brass and Woodwinds, expanding their opportunity to engage in a chamber series; and the addition of two guitar ensembles. The new guitar program will increase the number of ensembles to include four string orchestras, one full symphony orchestra, one wind ensemble, and two levels of guitar ensembles, all with the opportunity to perform in a professional atmosphere and practice those skills necessary to do so.

Eligible Rental Fee: \$5,000
Recommended Award: \$2,750

Orpheus Male Chorus of Phoenix:

The Orpheus Male Chorus of Phoenix and the Women’s Orchestra of Arizona will be collaborating to present a joint concert. The audience will enjoy the enveloping harmonies of a large male chorus and the unique and soothing sounds of an all-women’s orchestra, and will delight in selections performed as the men of Orpheus sing and the women or the Women’s Orchestra of Arizona support and accompany the voices. While audiences have certainly heard choral and orchestral collaborations before, these two organizations have never performed together before.

The primary objective of this project is to bring entertaining choral and orchestral performance to the community. Neither the Orpheus Male Chorus nor the Women’s Orchestra of Arizona have performed at the Mesa Arts Center and this will be a new and unique experience for audiences in the East Valley. This collaboration will bring new audiences to the Mesa Arts Center, the Orpheus Male Chorus, and the Women’s Orchestra of Arizona, and those audience members will enjoy this unique blend of male voices of Orpheus and the outstanding talents of the Women’s Orchestra of Arizona.

Eligible Rental Fee: \$3,948
Recommended Award: \$1,579

Phoenix Children’s Chorus:

Due to COVID, PCC’s May 2020 Americana concert was postponed to May 2021. This grant will offset operating expenses for the May 8, 2021 spring performance at the Ikeda Theatre. This concert series "Sea to Shining Sea" will honor former and current military in partnership with Vettix. The 400-member chorus will be performing songs showcasing American composers, American folk music, and patriotic compositions for an audience of parents, patrons, valley music teachers, community partners, and choral music enthusiasts. They also commissioned a song called "Home" for this concert series. All text in the song was written by the students and the piece was composed by Victor Johnson.

PCC's choirs— Presto, Canto, Cadenza, Bravo, Vivace, and Encore -will each sing several songs, with the finale featuring the combined choirs performing a special arrangement to celebrate Memorial Day. The audience will also include 100 at-risk students from the Mesa area. A grant from Season for Sharing provided complimentary tickets to students attending Title 1 schools for the 2019 performance. This project will be repeated in 2021 because it has received positive feedback from students, teachers, and parents.

| | |
|----------------------|---------|
| Eligible Rental Fee: | \$1,500 |
| Recommended Award: | \$600 |

The Phoenix Symphony:

The Phoenix Symphony is requesting support for *Handel's Messiah*, a holiday tradition at MAC that features a profound musical statement of the Christian faith that celebrates the life, death, and resurrection of Jesus. This production will celebrate its 16th year at MAC.

| | |
|----------------------|---------|
| Eligible Rental Fee: | \$2,547 |
| Recommended Award: | \$637 |

Phoenix Youth Symphony:

PYS will perform their 2020/2021 Fall All-Ensembles Concert featuring all seven ensembles with over 250 student musicians from ages 5 to 18. The audience will experience the range of their programs from the Prelude Strings, young musicians who are playing in an orchestra for the first time, to the Youth Orchestra, high school aged musicians performing top level compositions such as Prokofiev, Beethoven and Shostakovich. This will be the first concert of the season and the first opportunity for many students to be seen and heard by their family and friends in a professional concert venue. PYS will extend special invitations and pricing to senior living facilities throughout the East Valley and free tickets to many non-profits that introduce music to underprivileged students such as Rosie's House, Sounds Academy and Harmony Project.

| | |
|----------------------|---------|
| Eligible Rental Fee: | \$2,674 |
| Recommended Award: | \$1,070 |

Salt River Brass:

Salt River Brass Band requests assistance for their 2020-21 concert series at the Mesa Arts Center. Because of the challenges that COVID-19 brings to the 2020-21 concert season, they have decided to focus on two live concerts that will be performed in the spring of 2021, rather than their typical six. SRB hopes to reach 2,000 audience members with these two performances.

United We Swing – For more than 20 years, the Salt River Brass has dedicated a concert to America's indigenous art form, Jazz. SRB continues this tradition with a swing into the golden era of music with enthusiastic works from Count Basie, Duke Ellington, and the immortal Louis Armstrong.

Cry of the Celts – Leprechauns and Shamrocks and Brass Music, oh my! The Salt River Brass will travel to Ireland and Scotland for a musical voyage the audience will never forget by delivering an eclectic mix of classic Celtic songs, including The Irish Washerwoman, Men of Harlech, and the timeless favorite Danny Boy. Music from the Hollywood epic Braveheart and the Irish folk song Believe Me, if All Those Endearing Young Charms warm the heart. These powerfully enduring songs speak to music lovers of all ages!

Programming for each of these two-hour concerts is selected both to challenge the musicians and to provide entertainment and enrichment for the audience, while relating to an over-arching concert theme.

During SRB concerts, guest artists and other members of the band engage our patrons by sharing musical history and personal stories on stage to enhance their listening experience and the educational value of the performance. These two concerts will also provide the SRB with an opportunity to audition the finalists for the position of their new music director.

SRB also plans to present online workshops for area high school and middle school band students. Their mission is to provide entertaining and educational concerts for audiences through the presentation of brass band performances, educational programs, and the production of recordings, while providing a

rewarding experience for its volunteer musicians. Although COVID-19 presents challenges, they are looking for new ways to fulfill our mission, while continuing our long relationship with the MAC.

| | |
|----------------------|---------|
| Eligible Rental Fee: | \$5,000 |
| Recommended Award: | \$3,500 |

Silambam Phoenix:

Silambam is presenting ‘Sampoorna Margam’. The word ‘Margam’ refers to a path and in Bharatanatyam (south Indian classical dance form), Margam refers to a prescribed order in which items are performed during a performance, and the word ‘Sampoorna’ means complete.

The Margam prescribes eight different categories of items. Typically, one item from each category is performed during a margam. A complete margam could take anywhere from 2 to 3 hours. However, over the past decade, dancers have been performing condensed margams due to want of time. Silambam’s main objective with this project is to explore the margam completely, hence the title ‘Sampoorna Margam’. This Margam is unique because it will be showcasing the Thanjavur Bani, a specific style that has been practiced for more than two centuries. The Thanjavur bani is characterized by geometric dance movements and abhinaya (mime and storytelling) that is subtle and stylized.

The artistic director and the students of Silambam Phoenix belong to the seventh and eighth generation of dancers who can trace their lineage directly back to the creators of the Thanjavur bani. One of the main objectives of this project is the preservation and presentation of the Margam in authentic Thanjavur bani, that is hailed as a classic and stylized bani by practitioners of Bharatanatyam world over.

The students of Silambam will also be putting together poster presentations on the Thanjavur lineage, the style, and the pieces, to be presented outside in the lobby before and after the performance for the audience to read and enjoy.

| | |
|----------------------|---------|
| Eligible Rental Fee: | \$1,500 |
| Recommended Award: | \$1,050 |

Southwest Shakespeare Company:

In response to the Covid-19 pandemic, Southwest Shakespeare Company has altered their 2020–21 season to ensure audience and performer safety. Everything is new. Audiences can expect very little in terms of lobby/FOH activity. SWS shows will be streamlined for social distancing. The shows and events will be especially excellent, scholarly, highly entertaining performances.

To balance the economic impact of smaller audiences, rather than the typical Fall Rep (with two large scale productions) each weekend they will present a different critically acclaimed show. Performers are well vetted. Their shows are tried and true but new to Arizona audiences. During the week they will have small scale student matinees - fewer schools will be able to participate but several are planning to come. In the evenings they have planned a Readers’ Theater in which they can deliver the plays they had planned to do in the season as well as a few surprises. (In talks with Claire Van Kampen about getting permission to read her play: “Farinelli and the King” complete with a counter tenor and music!) Local actors will love the opportunity to keep their tools sharp - and audiences will be spoiled for choice!

| | |
|----------------------|---------|
| Eligible Rental Fee: | \$5,000 |
| Recommended Award: | \$4,000 |

Tetra String Quartet:

The Tetra String Quartet is proposing a series of two Azure Family Concerts at the Mesa i.d.e.a. Museum. Azure concerts are fun, friendly, and engaging performances tailored to children and young adults who are on the autism spectrum or have similar challenges.

Since many with autism (or related challenges) cannot attend traditional music performances due to uncontrollable vocalizations or physical movements, the Tetra String Quartet felt a real need to create a musical environment whereby not only are such behaviors not frowned upon but accepted and embraced.

Azure concerts are approximately one hour in length. Family members and caregivers of all ages are

welcome to attend! The performance is followed by an instrument petting zoo where audience members get a turn to make music themselves.

Concerts are available to any family, free of charge.

| | |
|----------------------|---------|
| Eligible Rental Fee: | \$1,200 |
| Recommended Award: | \$960 |

WISH Foundation:

The project is to sponsor a cultural show to celebrate the 15th anniversary of Sampradaya Dance of India by 80 students from the Valley who have learned the classical dances of India. The project is to sponsor a cultural show to celebrate the 15th anniversary of Sampradaya in its original form and tradition. The dances emphasize the facial expression, intricate foot movements and hand gestures in colorful costumes and jewelry. The dances are set to live melodious music set to various rhythms.

The public will experience the live performance of a 3000-year-old classical dances of India. There will only be one performance of the show that will last 2.5 hours. The children will be practicing and rehearsing to the recorded music every day in dance classes. On the day prior to the actual show, the children will rehearse with the live orchestra. The performance will take place on April 25, 2021 from 3:00 PM to 6:00 PM at the Piper Theater at Mesa Center for the arts.

| | |
|----------------------|---------|
| Eligible Rental Fee: | \$1,502 |
| Recommended Award: | \$826 |

Youth Symphony of the Southwest:

The Youth Symphony of the Southwest presents five concerts each season. Four of these programs are performed by the student orchestra alone. The fifth is a side-by-side program with the Symphony of the Southwest, the parent organization of the Youth Symphony of the Southwest. The current year will include a special observance in honor of the 250th birthday of Ludwig van Beethoven.

These performances offer students an opportunity to perform some of the best classical repertoire in a world-class theatre under the direction of a world-class conductor. The YSSW also provides scholarships to qualified students to allow them to participate regardless of whether they can pay tuition.

| | |
|----------------------|---------|
| Eligible Rental Fee: | \$5,000 |
| Recommended Award: | \$1,250 |

| | |
|-------------------------|----------|
| Total Awards Requested | \$68,602 |
| Total Funds Recommended | \$29,910 |

EXHIBIT B

Small Business Reemergence Funding to MAC Founding Resident Companies

| Organization | Rent/Storage* | Utilities* | TOTAL |
|--------------------------------|----------------------|-------------------|-----------------|
| East Valley Children's Theatre | \$13,376 | \$2,713 | \$16,089 |
| Mesa Encore Theatre | \$6,525 | \$982 | \$7,507 |
| Metropolitan Youth Symphony | \$1,584 | \$3,194 | \$4,778 |
| Southwest Shakespeare Company | \$3,482 | \$368 | \$3,850 |
| Symphony of the Southwest | \$1,353 | \$47 | \$1,400 |
| TOTAL | | | \$33,624 |

***Covers Three Months of Rent and Utilities (July-Sept)**

EXHIBIT C



Arts and Culture Programs during COVID

July 20, 2020



Introduction

- Collaborative Team Approach
 - Three orgs working together and sharing staff
 - Exploring partnerships with Libraries, Parks, Neighborhood Services
 - Exploring services through Southwest Shakespeare, Mesa Historical Museum
- Prioritize, schedule and efficiently use human resources for biggest public impact/ROI
- Reengage volunteers for remote or touch free assistance as feasible

K-12 School Support/Enrichment

- Conducted surveys and interviews to find out what educators need/want
- Education staff from three institutions working as team
- Package offerings across department
- All planning multiple resources—videos, live Zoom, worksheets, activities, material kits
- Provide standards-based resources for all age groups, multiple disciplines (science, social studies, language arts, arts)
- Venues serve multiple overlapping age groups, each with specialty focus
 - i.d.e.a. Museum, pre-K thru 3rd Grade
 - AZMNH, 3rd-6th grade
 - MAC, middle and high school

K-12 School Support/Enrichment

Curriculum Development—initial focus areas:

AZMNH:

- Translate live Dino Hall experience into remote learning, support science curriculum
- Museum in a Box experiences (exploring possible Library collaboration)



K-12 School Support/Enrichment

i.d.e.a. Museum:

- Using curriculum created for “Art of the Story” exhibit, supports reading curriculum for K-3
- Home School Lab—virtual for now (later, in person)—providing resources/support for home-schoolers



Conversations with Dragons

K-12 School Support/Enrichment

MAC:

- Project Lit—using poetry/spoken word to advance language arts and social/emotional literacy
- Zuill Bailey—grant will support ongoing music education experiences
- MCA and Arts Studios will support visual arts learning experiences



For all three organization, future K-12 program development will feature other themes, curriculum

Vulnerable Populations

- Veterans—Arts in Service studio classes (underway, online)
- Older Adults--Creative Aging Activities (underway, online)
- Exploring more ways to reach/support older adults in isolation, group living
 - Targeted expansion of Snail Mail Art to seniors
 - Community art activity/installations at nursing homes
 - Visits by MABEL



GIVING VOICE

Choir for Adults Living with
Dementia and Their Care
Partners



DANCE FOR PARKINSON'S DISEASE



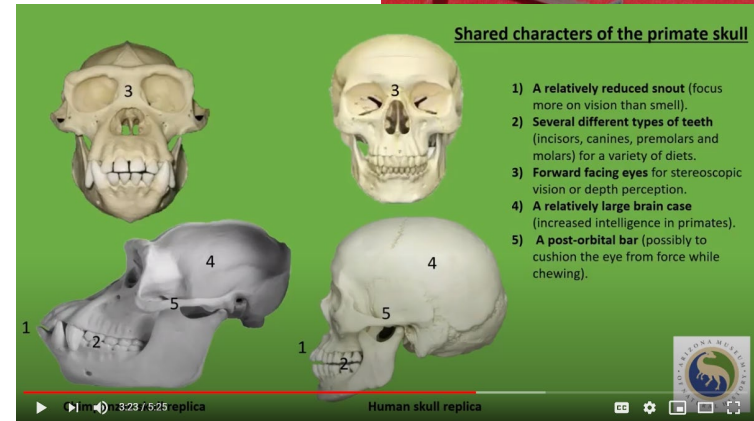
CREATIVE AGING CLASSES

For Adults Ages 55+

Family/Individual Well-being, Learning & Entertainment

AZMNH:

- Fall Natural History Course (8 weeks, 2x/week)
- UCurate!—series about museum collections/artifacts
- Meet the Scientist
- Fun Fridays—videos about fossils and animals
- Weekend Wonder—activities for children



Family/Individual Well-being, Learning & Entertainment

i.d.e.a. Museum—iArt:

- Early Learning—pre-K skill building
- Imagination—writing and pretend play
- Design build activities
- Experience—reading, acting and other activities
- Art—hands-on art projects
- Virtual Girl Scout Workshops



i.d.e.a. Museum
200 followers

Following

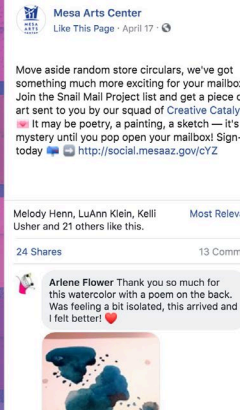
DIY Musical Instruments

Explore the art of rhythmic expression with these 3 simple and fun musical instruments! All you need are... [More](#)

Family/Individual Well-being, Learning & Entertainment

MAC:

- Online Arts Studio Classes (underway and ongoing)
- Art in a Box—materials and instruction
- Snail Mail Art—CC free personalized small artworks
- Art Studio demos and activities



PREPARING LIVE | MESA CONTEMPORARY ARTS | ART STUDIO



Mesa Contemporary Arts Museum Printmaking Activity: Relief Prints
The art of Printmaking encompasses many techniques that can create an infinite variety of images. This project allows beginning printmakers - children and adults - to gain a basic understanding of the media and the fun of creating personal, colorful works of art. Relief prints using printing plates made from thin foam are an easy and inexpensive option for anyone wanting to experiment with the art of printmaking.



Thank you to our young artist, Azoah,
for creating this beautiful work of art!

Family/Individual Well-being, Learning & Entertainment

MAC:


- Writing Prompts—Theme-based, easy guidance, poetry performance
- Online Performing Arts (Magic show; Zuill Bailey concerts)
- “Show Us What You’ve Got” —art created during quarantine (online art exhibition/competition— launches this week)
- Future: virtual shows, possibly incl. National Geographic Live, Jazz at Lincoln Center Orchestra



Building Community

In Process or Under Development:

- Together in the Desert—May-July A&C family activities in conjunction with downtown restaurant promotion
- MABEL Pop-up Experiences



Mesa Family Take Out Night
Mesa Arts Center - 1 / 4

▶ **Together in the Desert: Week One**
Mesa Arts Center 7:57

2 **Together in the Desert: Week Two**
Mesa Arts Center 8:40

3 **Together in the Desert: Week Three**
Mesa Arts Center 6:43

4 **Together in the Desert: Week Four**
Mesa Arts Center 7:09

Together in the Desert: Week Two
Mesa Arts Center
121 views · 2 months ago

#mesatakeout #togetherinthedesert
Together in the Desert: Week One
410 views · May 6, 2020

👍 11 🗨️ 0 ➦ SHARE 📌 SAVE ...



Building Community

- Dia de Los Muertos—Large Community Altar installation (possibly @north end for drive-by viewing)
- The Collective—solicit and implement new cohort of creative leadership class
 - Continued meeting/engagement of past cohorts
 - Engage Collective cohorts and Creative Catalysts in community activities



Building Community

Downtown Free Exhibitions:

MAC—in Theater Building windows

- “Distanced but Not Separated” exploring importance of connectivity, creative expression

i.d.e.a. Museum—installation in vacant storefront

- “Fantasy Garden” -- colorful landscape and fanciful creatures, incorporate public’s artwork

AZMNH— installation in vacant storefront

- “Dig It!” – exhibition on Paleontology and Archeology—what are they and what do they discover



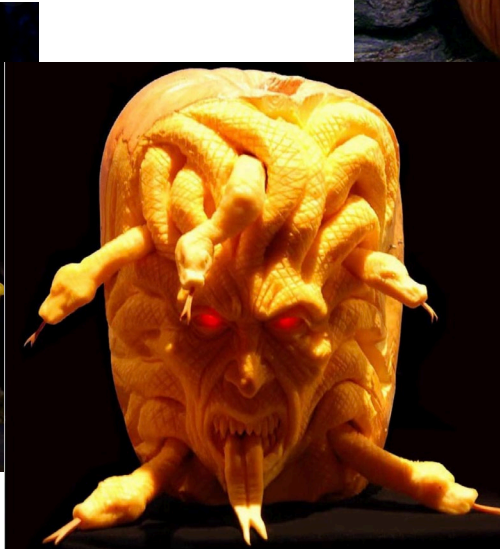
Building Community

Being Explored:

Downtown Mesa Exhibition of Ray Villafane works at Halloween

- Will pre-promote future opening of Alice Cooper Teen Rock Center
- Ray renowned, extraordinary artist
- Install fanciful outdoor (and/or in windows) exhibit at A&C venues, downtown storefronts







Building Community

Yarn Bombing Installation in downtown Mesa

- Commission artist-designed landscape installation
- Call for knitted or crocheted pieces from the public
- Art landscape “unveiled” with installation

Drive-in Concerts

- Like fireworks—live bands, distanced parking (pay per car)



For When Things Improve—Outdoor Opportunities:

- Open Mesa Grande with limited, timed capacity
- Events at Mesa Amphitheater, severely reduced capacity
- Mesa Prototyping Festival—outdoor site-specific prototypes ready to go (postponed in March, not yet rescheduled)
- EMERGE—The Future of Food
 - ASU and MAC Collaborative outdoor festival rescheduled to February 2021
- Youth Media Festival
 - ASU and MAC Collaborative event planned for March 2021 (indoor and outdoor, but could limit to evenings, outdoors)



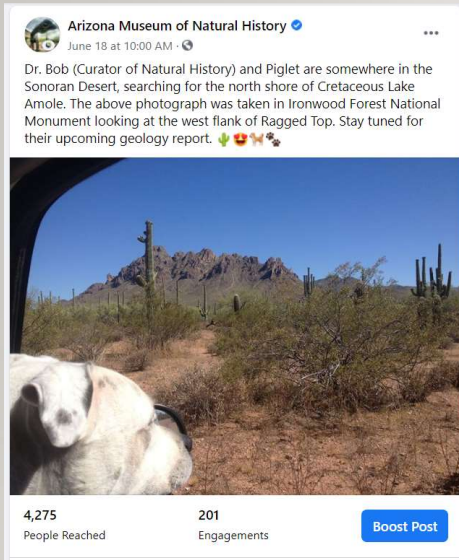
July 2020

Wishing Tom, many more adventures on his retirement



Reimagining the Museum with Online Learning Materials

- Online Learning Portal
- Meet the Scientist videos
- Ucurate! Series
- Fossil Friday
- Geology Field Trips
- Weekend wonder activities for the children
- Upcoming: Natural History Course



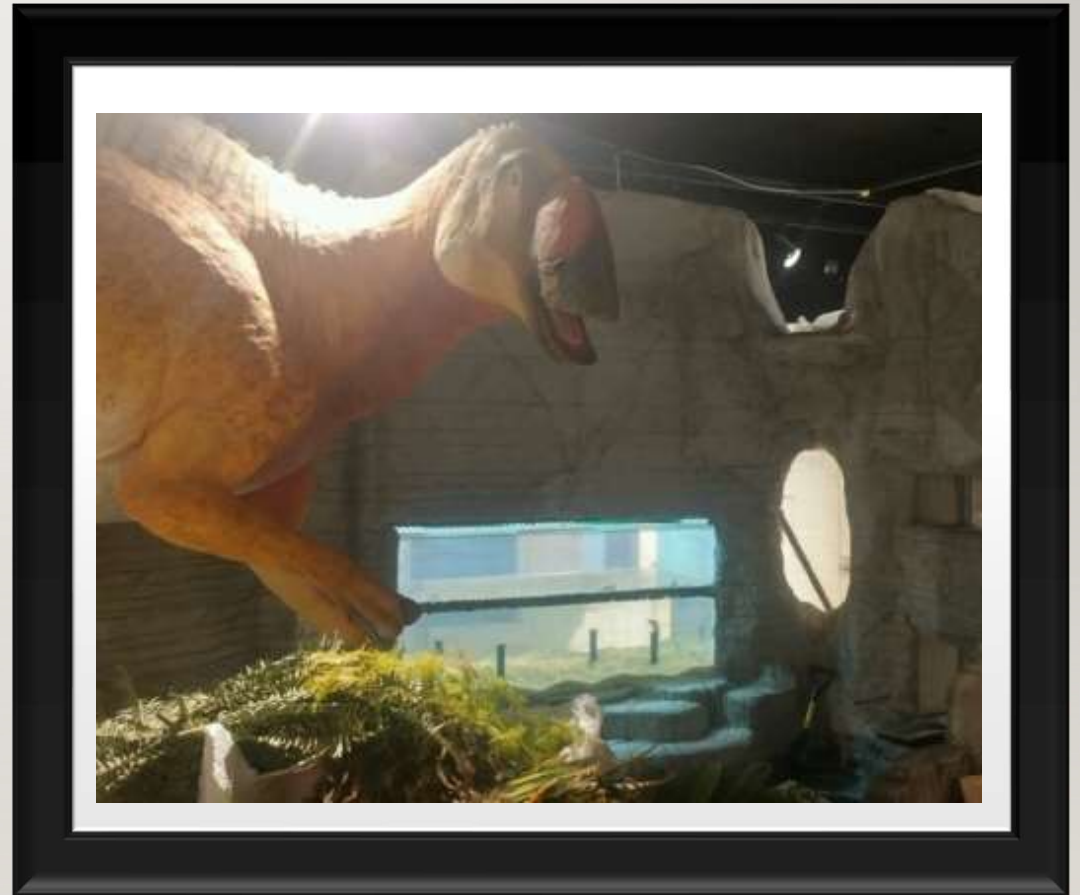
Screen shot of Volunteer Training Library

New Galleries:
75,000,000BC



Big to Small

- This gallery is designed to discuss the largest features of paleontology to the smallest, from Super Colossal Volcanoes fossil ostracods
- Features the research the Arizona Museum of Natural History has been conducting all over Arizona





Faux rock cave highlights marine fossils and living descendants in an aquarium



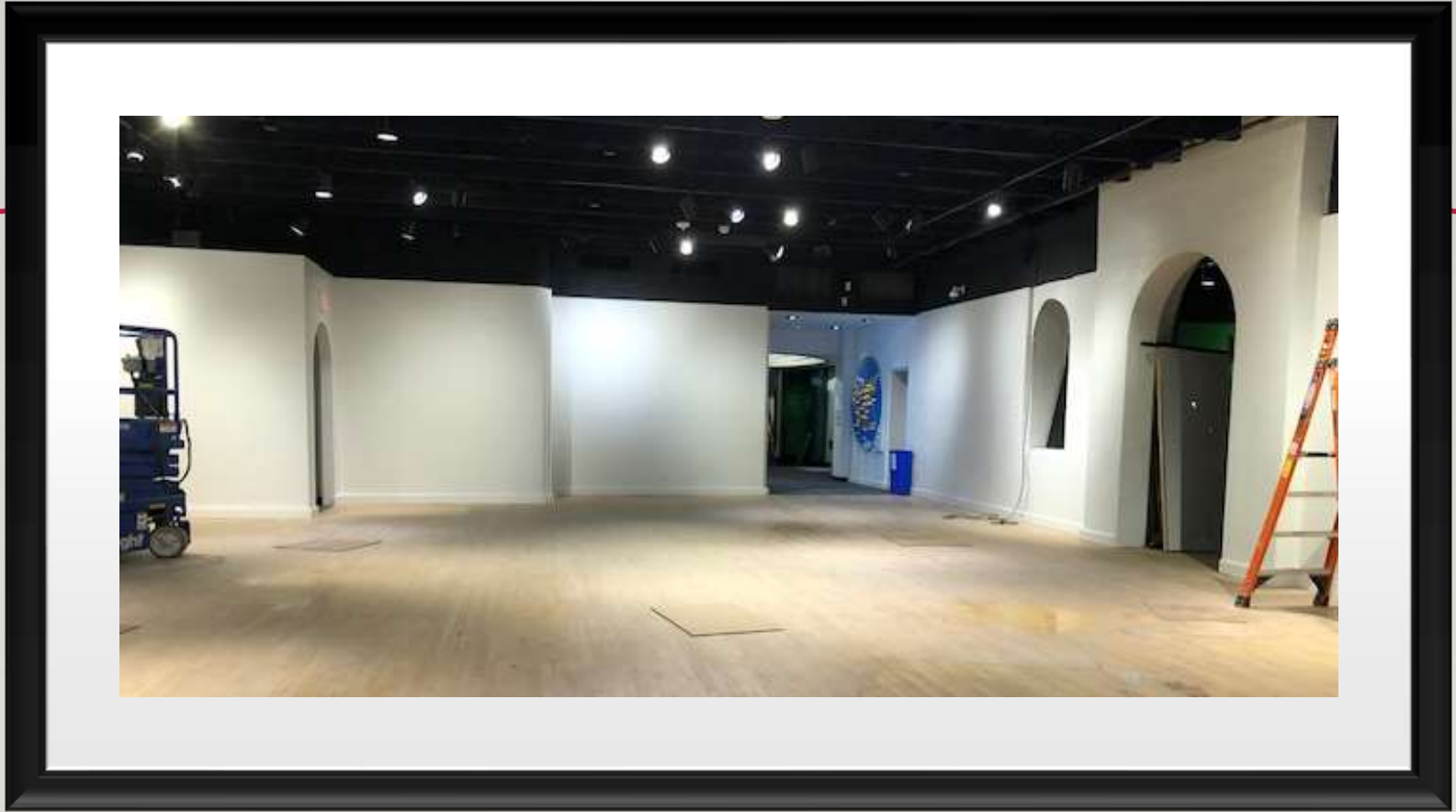
DINOZONE



Goodbye to DinoZone

- Curated as an immersive, a high touch area for Preschool to 4th grade.
- Highly popular for families for young children
- Introduction to Dinosaurs





This is Paleontology



This is Archaeology



Dig It Gallery

Building Improvements



- Basement Renovation
- Refinish the Wood Floor
- New Lighting in the Older Part of the Museum
- Sistine House

Latest Grant Awards

Thunderbird
grant

Summer Youth
Program Fund

AZ Humanities
Council

Pendleton

Giles W. And
Elise G. Mead
Foundation

Institute of
Museum and
Library Services

National Park
Service

AZ Community
Fund

Reopening the museum



- New Protocols and procedures
 - Limited capacity
 - Online purchasing with timed ticket entry
 - Directional flow
 - New cleaning protocol
 - Hygiene guards and masks

